

AMPCLiTE

**Version 8.0
Build 4.0 onwards**

Release Notes

U. A. Systems, Inc.

**TEL: (909) 608-1575
FAX: (909) 608-1578**

Rev: 8040

Table of Contents

Introduction	1
New features (Build 4.0 onwards).....	1
Installing AMPCLiTE on Your PC.....	3
Multiple Sessions.....	3
Configuration File.....	4

AMPCLiTE 8.0 Release Notes

Version 8.0

Rev: 8040

Date: May 9, 2002

Introduction

AMPCLiTE is an advanced "PC to host connectivity" program. The term "PC" refers to any Personal Computer running Windows 95, Windows 98, Windows ME, Windows NT, Windows 2000, Windows XP. You must setup TCP/IP connectivity on your PC in order to use AMPCLiTE. You will also need to install AMPC 5.0 (or later) software for the Falcon AMOS PC Coprocessor board.

Functions provided by AMPCLiTE :

AMPCLiTE offers features like Terminal Emulation, Printing to PC Printers from the host applications, Printing to host printers from PC applications, Hash utility to match the integrity of PC files, and many more.

1. [Terminal Emulation](#): You can use your PC as a smart color terminal for your host computer. AMPCLiTE emulates the following terminals. ANSI, AM62A, AM62C, AM65, AM70, Espirit III, Televideo 925/950, VT 100, Wyse 50 and Wyse 370.
2. [Printing to PC Printers](#) You can print from your host applications to PC printer using the pass-through printing feature (also called transparent printing or local printing or auxiliary printing) of AMPCLiTE.

An optional program, called [WinLPD](#), provides direct and faster printing to PC printers over TCP/IP connections without going through the TELNET terminal session.

3. Printing to host printers Use host printers as PC printer. The optional program, [WinLPD](#), provides this function over TCP/IP connections using the LPR client.

New features (Build 4.0 onwards)

- **Host Programming Interface.** Build 4.0 allows you to enhance your Unix and AMOS applications by using a variety of new Windows Interface functions. These functions are broadly classified in the following categories.
 1. **DDE Client Interface.** This interface allows you to pass information back & forth between your host application and Windows Applications (DDE Server). The complete range of DDE functions like DDEInitialize, DDEExecute, DDEPoke, DDERequest, DDEAdvise, DDEUnadvise, and DDETerminate are available to you to make full use of DDE conversations with Windows DDE Server applications.
 2. **PC File and Clipboard Interface.** A variety of interface functions are now available to you to send (write) the host data to PC Files/Clipboard and receive (read) data from PC Files & Clipboard.
 3. **Advanced terminal emulation interface.** A variety of specialized and advanced terminal features are available to your host applications even though the actual terminal may not offer them. These include, Save/Restore Rectangular Box/Area, Alternate Page,

etc.

4. **Miscellaneous functions interface.** A variety of functions offering FTP file transfer interface, launching of Windows applications, etc. are also available.
- **Terminal Emulation of advance features in Wyse50, Wyse 60, Wyse 150 and Wyse 350 Terminals.** Build 4.0 offers the following advance functions. Program function keys and other special keys, Send Cursor Line, Back Tab, Insert Mode support, Monitor Mode Support, Horizontal Split, Lower/Raise Horizontal Split Screen.
 - **Terminal Emulation of advance features in Esprit III terminal.** Build 4.0 offers the following advance functions. Program function keys and other special keys, Send Cursor Line, Back Tab, Insert Mode support, and Monitor Mode Support. You can also load a substitute character for the space character when executing Clear Screen commands.
 - **Enhanced Printer Support.** Build 4.0 now supports printers that do not support “raw” mode like HP 1000, etc.
 - **Force Num Lock and Caps Lock keys:** You can now setup the terminal emulator to force Num Lock, or Caps Lock, or both keys. This allows you to switch between your host application and windows applications without having to turn these keys on and off.
 - **Allow multiple sessions on start up.** Build 4.0 would allow you to start multiple sessions on start up and let you Tile or Cascade these windows, automatically.
 - **Save individual window sizes for multiple processes.** Build 4.0 saves the window position of the application under the configuration file name (.aln file). This would allow you to start multiple processes of the applications (using separate .aln files) and have individual window sizes and positions for each of these application processes (sessions).
 - **Enhanced Rebar for UDK buttons.** A number of changes have been made to the “Rebar” that shows 4 UDK buttons (and the address bar) as follows
 1. The button width adjusts automatically now, based on the length of the text on the buttons.
 2. You can also choose to limit the text shown on the button to a specific number of characters without any need to re-enter the label text for each button.
 3. The image shown on the buttons may now be hidden to save vertical screen space.
 4. A menu item “Arrange Buttons” has been added to “refresh” positions of UDK bands and buttons.
 5. The 4 UDK Bar bands will ‘maximize/minimize” on double clicking the mouse in the “level name” area of the band (instead of single click).
 6. The order of the bands within the “Rebar” is now fixed. The first band is the “Address Bar” (if shown) followed by the four UDK bars (UDK1 to UDK4). If you move one band to another row, the bands shown after the band being moved would also move. For example, if you move UDK2 bar to the second row, then UDK3 and UDK4 bar would also move to the second row to keep the same (fixed) order. This avoids display confusion where bands were getting interchanged.

7. The UDK band headers that display the "level name" for the UDK bars will automatically adjust in width to accommodate full level name as typed.

Installing AMPCLiTE on Your PC

AMPCLiTE software is included in the AMPC software.

Click on the "Virtual Terminals" tab under AMPC Configuration window to install AMPCLiTE. Please refer to AMPC documentation to learn how to run AMPC in the "configure" mode.

Select AMPCLiTE under the "Emulator" column and select "%p" under the command line column. The selection, "%p", tells AMPC to use the actual "Port number" to connect to AMPCLiTE. This parameter should not be changed. This would bring up AMPCLiTE running in its default mode using the "default.aln" as the configuration file for AMPCLiTE. If you want to use a different configuration file for this virtual terminal session of AMPCLiTE, you may add the name of the configuration file as the second parameter following %p. There is a discussion regarding configuration later.

Please leave a space after %p when specifying the name of the configuration file. The configuration file should be available in main AMPC directory (not in AMPC\AMPCLiTE directory). For example

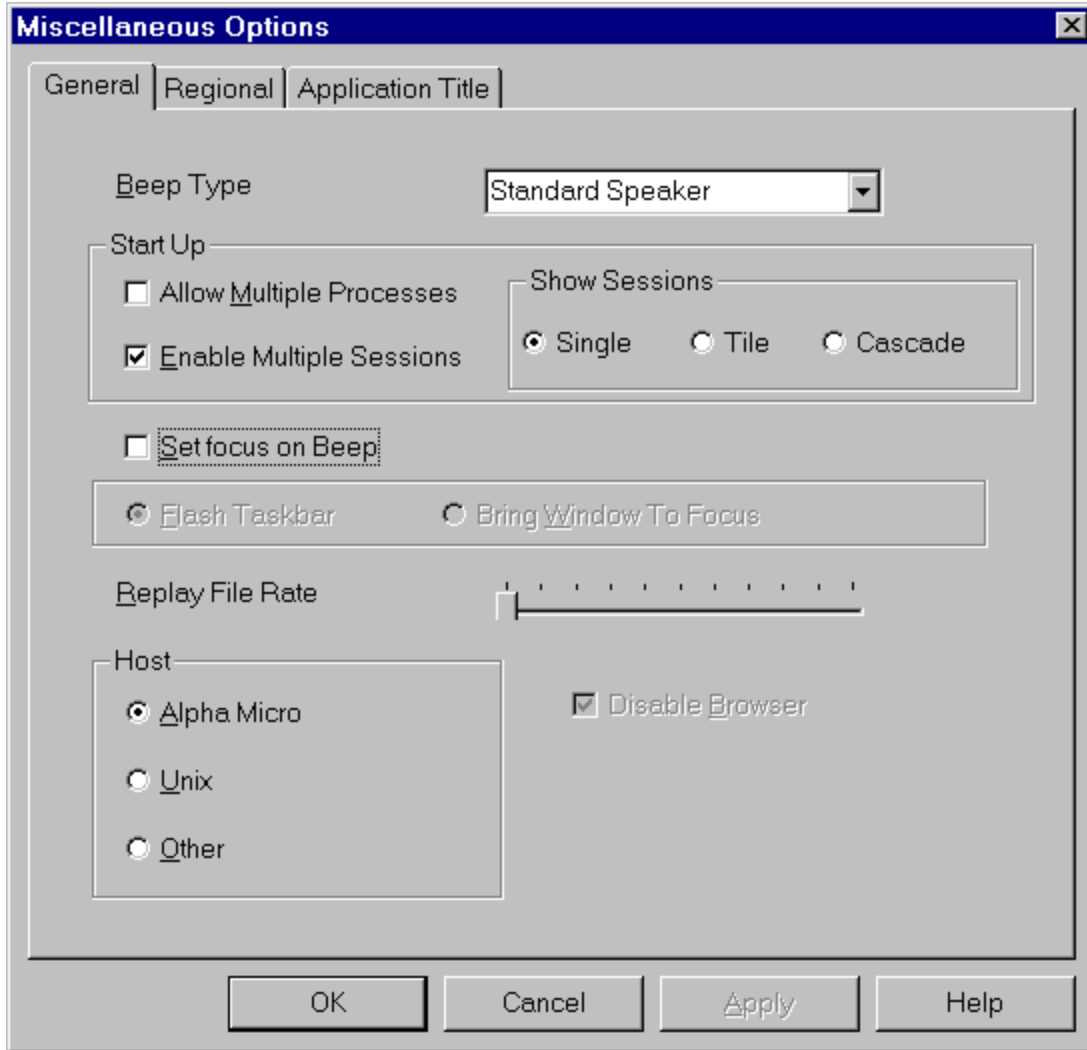
<u>Emulator</u>	<u>Command Line</u>
AMPCLiTE	%p am65.aln

AMPCLiTE will use the configuration settings from the am65.aln file. Please note that you can specify different configuration files for different Virtual Terminal sessions. Please refer to the next section "Multiple sessions" to get more details regarding how you can easily configure and conveniently use multiple sessions in AMPCLiTE.

Multiple Sessions

Unlike AMPCTERM, AMPCLiTE is an MDI (Multiple Document Interface) application and allows you to start multiple Virtual Terminal sessions within a single process. You can conveniently "toggle" between these multiple sessions by using the "**Control + Tab**" key.

By default, AMPC starts multiple Virtual Terminals in a "single process" as a "Single" window. If you are using larger size monitors, you can set up AMPCLiTE to start these multiple sessions side by side by using the "Tile" or "Cascade" mode. This setting is available under Settings, Miscellaneous, General tab under "Show Sessions" in AMPCLiTE as shown below. If you do not wish to use "Multiple Sessions" at all, you can disable it by removing the check on "Enable Multiple sessions". AMPCLiTE will then "ignore" your AMPC configuration settings for additional Virtual terminals and display only the first Virtual Terminal session.



While "Single Process" MDI Window of AMPCLiTE is the best way to display "multiple sessions", you can disable this "unique" feature of AMPCLiTE and use Windows "native" function to display multiple sessions in multiple processes similar to AMPCTERM. To do so, check "Allow Multiple Processes". In this case, you will need to use the Windows "Alt+Tab" key to switch between AMPCLiTE sessions.

Configuration File

AMPCLiTE uses a "configuration file" to store and load your settings for each "session". The session refers to the AMPCLiTE terminal emulation window. All configuration files should have the ".aln" extension. The default name for AMPCLiTE configuration file is "default.aln". If you want to use another configuration file, please use the "Save as" option in the Session Menu to create another configuration file.

When you start AMPCLiTE, it automatically starts the "terminal session" using the "default.aln" configuration file. If you want AMPCLiTE to use another configuration file for

the "virtual terminal session", please add this configuration file name in the command line in front of the %p command in AMPC, Virtual Terminals Configuration tab. Please refer to the previous topic "Installing AMPCLiTE on Your PC" and AMPC release notes for details.

Note: Please refer to "html help" in AMPCLITE software for detailed documentation of various features of AMPCLITE. You can invoke this "html help" by going to "Help", "Contents" in AMPCLITE software.

Disclaimer

The information in this document could include inaccuracies or typographical errors. U.A. Systems, Inc. makes no representation or warranties with respect to the contents of this document and specifically disclaims any implied warranties of merchantability or fitness for any particular purpose. Further, U.A. Systems, Inc. reserves the right to make changes from time to time without obligation of U.A. Systems, Inc. to notify any person or organization of such changes.

U.A. Systems, Inc.

1232 N. Monte Vista Ave, Unit
#5
Upland, CA 91786

Voice: (909) 608-1575
Fax: (909) 608-1578
E-mail: support@uasys.com